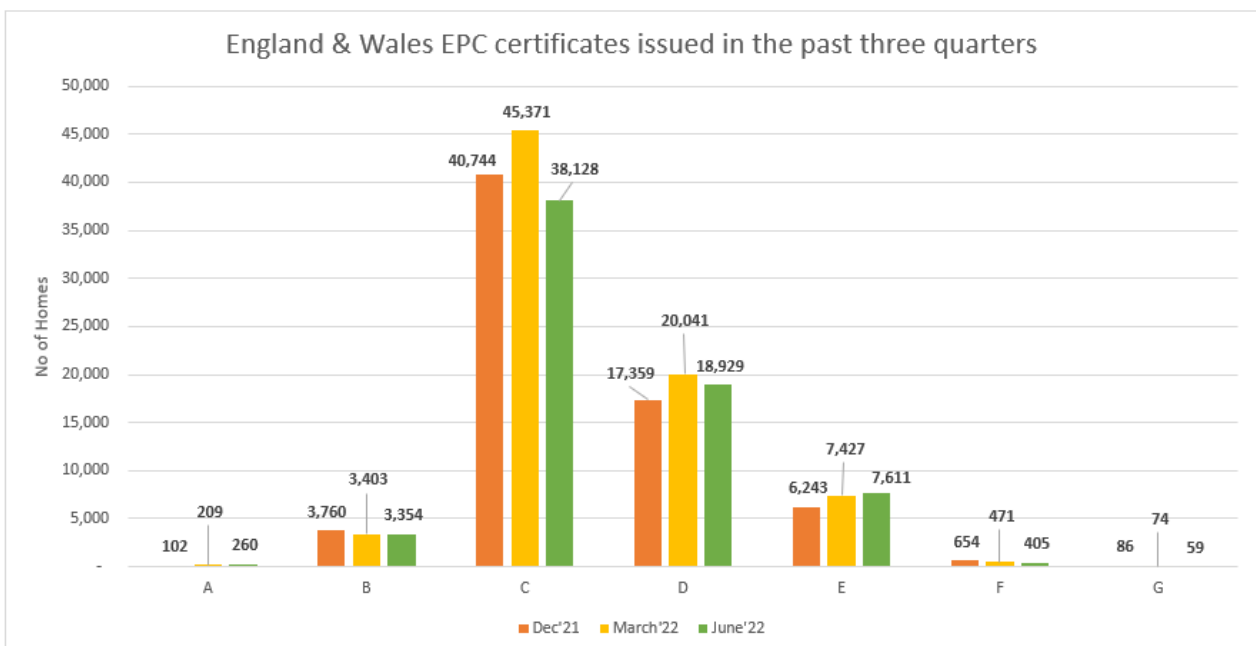
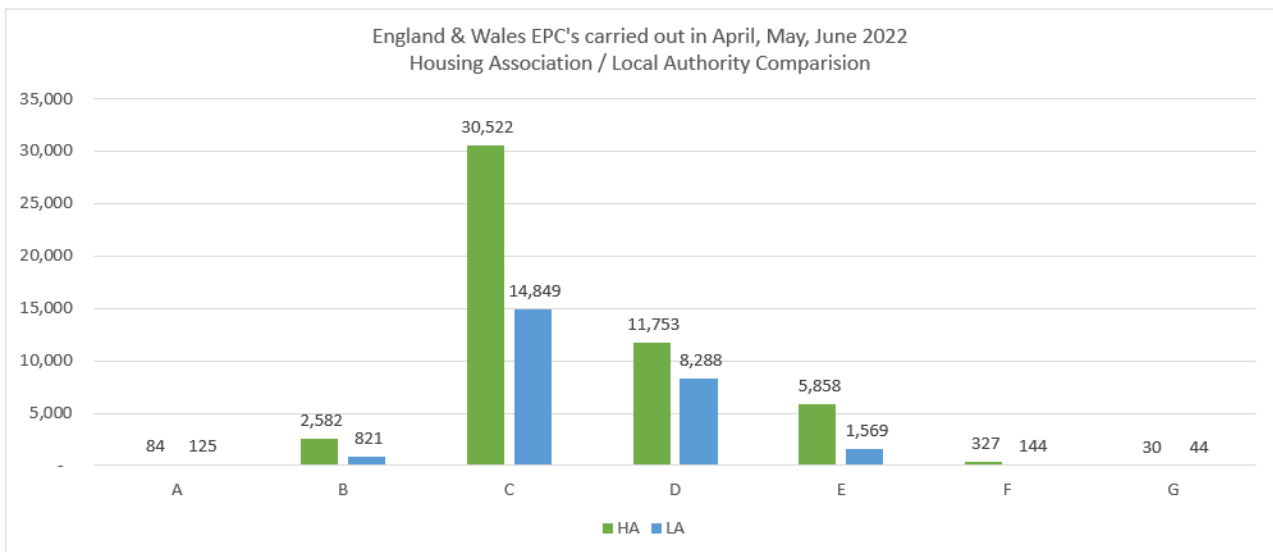


## Locarla Properties Overview

Locarla is an online platform of business intelligence information and data, built for RMI & Construction companies working in the public sector. We specialise in Social Housing. We excel at tenders & contract award data.

We provide a data service to companies, with products and services to sell to Housing Associations & Local Authorities, and to the organisations we collect data on.

We first started working with EPC data in 2020 when we scrubbed 4.6M Land Registry titles against the EPC register and built software to view and manipulate the resulting database. Our EPC data is updated four times a year.



## Locarla Properties – EPC - Renewables – Net Zero

It starts with how we manage tenders and awards. We don't use CPVs, but read (by a human), and re-categorize each one by Trade and/or Service. Each notice is stripped of data and the information is fed into our database. Clients can then use the filters and keyword searches to only view notices they are specifically interested in.

The screenshot shows a software interface for managing notices. On the left, there are two panels: 'Select Options' and 'Selected Options'. The 'Select Options' panel includes filters for Contract Type, Sector, Location, Trades & Services, Expiring in..., and £ Value (Less Than). The 'Selected Options' panel shows 'Trades & Services' with selected items: 'EPC / Energy M...', 'Solar PV', and 'Retrofit'. To the right, there are two filter panels: 'Trades & Services' and 'R&M'. The 'Trades & Services' panel has checkboxes for R&M, M&E, Materials, Professional Services, FM, Construction, Building Envelope, Plumbing & Gas, and Other Varied Trades. The 'R&M' panel has checkboxes for Adaptations, DHS, DLO Support, Doors & Windows, Glazing, Kitchens & Bathrooms, Out of Hours Repairs, Painting and Decoration, R&M Works (Various), Responsive Repairs, Retrofit, and Voids. On the far right, a table displays a list of notices with columns for CLIENT, WINNER, and TRADE.

CLIENT	WINNER	TRADE
Nexus	-	EPC / Energy Manageme...
North Tyneside Council	Dyson Energy Services L...	Retrofit, External Wall In...
Northern Ireland Housing ...	-	Responsive Repairs, Ada...
Incommunities Ltd.	Dyson Energy Services Ltd	Retrofit, External Wall In...
East Renfrewshire Council	Valley Group Ltd	Roofing, External Wall In...
Bridgend County Borough C...	-	EPC / Energy Manageme...
The University of Leicest...	-	Solar PV
Historic England	UCL Consultants Ltd	EPC / Energy Management
North West Academies Trus...	ECS Consultants Ltd	EPC / Energy Management
West End Primary Academy	ECS Consultants Ltd	EPC / Energy Management
Lancashire Constabulary	Equans Regeneration Ltd	Solar PV
Somerset NHS Foundation T...	WSP UK Ltd	Project Management, EP...
St Mary's Church of Engla...	ECS Consultants Ltd	EPC / Energy Management

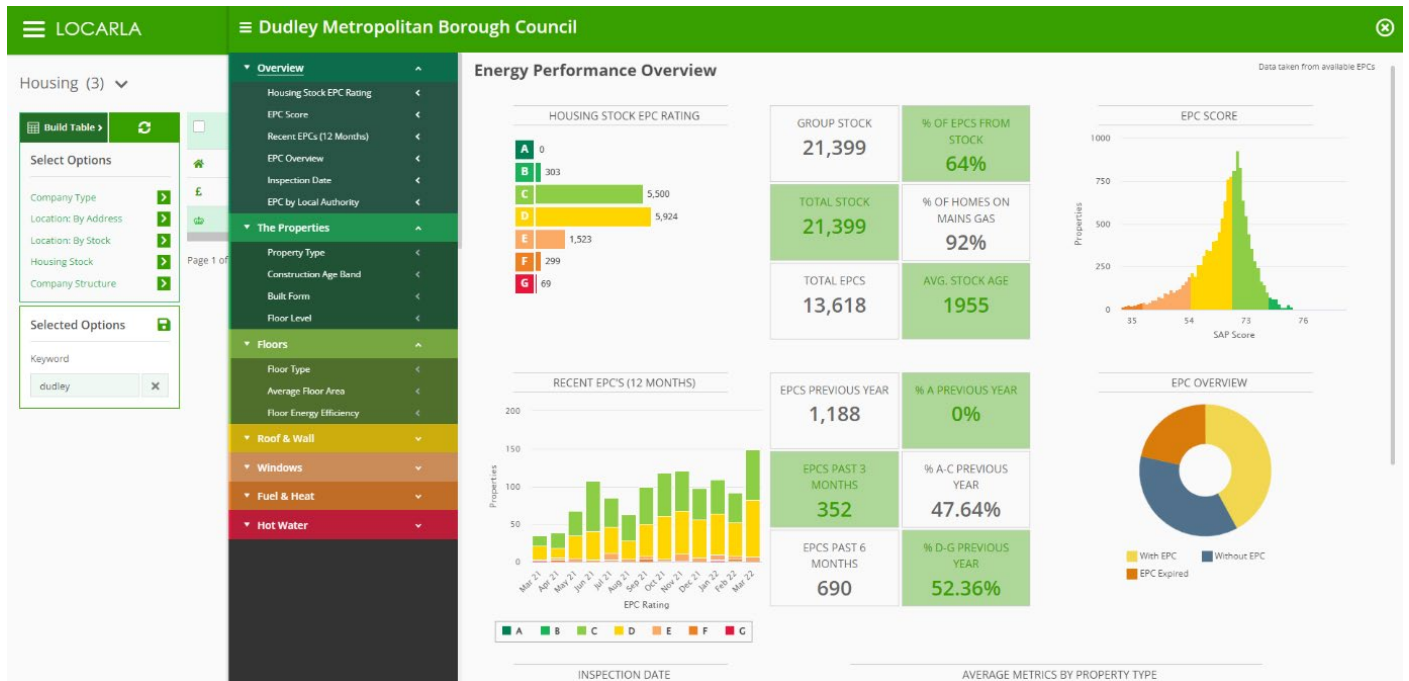
In our 'Housing' table clients can choose up to 292 fields of data to populate the grid, 29 of these are EPC related.

The screenshot shows a 'Build Housing Table (1,963)' interface. At the top, there's a green header with 'Build Housing Table (1,963)' and a close button. Below the header, there's a 'Default View (36/43)' section. On the left, there are two columns of filters: 'Apply' and 'Clear'. The 'Apply' column contains filters for Company Name, Total Stock, % Stock with EPC, % Houses with EPC, % Flats with EPC, % with EPC A-C (Current), EPC Expired, % of EPCs Over 3 floors, % of EPCs Over 6 floors, Average SAP Rating of Homes, Average Stock Age, Homes On Mains Gas, % Homes with Gas Boiler, and Homes with Heat Pumps. The 'Clear' column contains filters for Profile (10/11), LA MAINTENANCE DATA (0/17), ENERGY PERFORMANCE (13/29), Stock With EPC (13/13), Energy Rating And Efficiency (0/16), Average Energy Efficiency - SAP (Current), EPC A (Current), EPC B (Current), EPC C (Current), EPC D (Current), EPC E (Current), EPC F (Current), EPC G (Current), and Average Energy Efficiency - SAP (Potential). On the right, there's a search bar with 'Name Search...' and an 'Export' button. Below the search bar, there's a table with a header 'DLO' and a column 'TYPE'. The table lists various clients and their types.

DLO	TYPE
Aberdeen City Council Building Serv...	L
Aberdeenshire Council Repairs Team	L
Abri Repairs Service	L
Adra Repair Team (Tim Trwsio)	II
Anchor On Call	L
Ashfield Council Repairs Team	L
Ashford Borough Council Electrical ...	L
Ashton Pioneer Homes Estate Service...	L
Aspire Response	S
Ateb Group Direct Labour Services	L
Atrium Property Services	L
B3Living Repairs Services	L
Babergh And Mid Suffolk Building Se...	L
Barking And Dagenham Home Services ...	L
Barnet Homes - Repairs Team	A
Bassetlaw District Council Repairs ...	L
Berneslai Homes (Construction Servi...	A

# Locarla Properties – EPC - Renewables – Net Zero

Land Registry and EPC data is combined to analyse the condition of the housing stock for each organisation.



We map 4.6M Land Registry titles in England & Wales.

**Locarla Properties (4,604,310)**

**Property Features**

- Roof Description
- Wall Description
- Floor Description
- Windows Description
- Habitable Rooms
- Heated Rooms

**Roof Description**

- Pitched
- Flat
- Roof Room(s)
- Other

**Pitched**

- Insulated
- Limited Insulation
- Loft Insulation
- No Insulation

**Loft insulation**

- < 100mm
- 100mm - 249mm
- 250mm - 270mm
- 270mm+
- Others

DISTRICT	Address	City	County
RHONDDA CYNI			
LEWISHAM			
COUNTY DURHAM			
COUNTY DURHAM			
THREE RIVERS			
DALBY AVENUE	HARROGATE	HARROGATE	
THOMAS WYATT ROAD	DEVIZES	WILTSHIRE	
SPIN HILL	DEVIZES	WILTSHIRE	
STEVENS DROVE	STOCKBRIDGE	TEST VALLEY	
RODENBURY CLOSE	FROME	MENDIP	
GUEST GROVE	BIRMINGHAM	BIRMINGHAM	
ROMAN COURT	TAMWORTH	TAMWORTH	
DEBDALE COURT	PETERBOROUGH	FENLAND	
HENDLEY DRIVE	CRANBROOK	TUNBRIDGE WE	
SUMMERSGATE STREET	HALIFAX	CALDERDALE	
QUEEN STREET	NEWCASTLE UPON TYNE	NEWCASTLE UP	
GROVE ROAD	THORNTON HEATH	CROYDON	
VARCOE GARDENS	HAYES	HILLINGDON	

Page 1 of 92087 (4,604,310 results) 1 2 3 4 5 ... 92087 10 50 100

Locarla Properties – EPC - Renewables – Net Zero

Where an EPC is present, clients can look at the property in more detail.

**Locarla Properties (467)**

**Housing Solutions Group**

**EPC: 65 D**  
 1950-1966. Semi-Detached. Cavity Wall. Area: 78.00m  
 Mains Gas - Mains Gas. Double / Multiple Glazed

**Improvement** | **Indicative cost**

Increase loft insulation to 270 mm	£100 - £350
Cavity wall insulation	£900 - £1,500
Solid floor insulation	£4,000 - £6,000
Solar water heating	£4,000 - £6,000
Solar photovoltaic panels, 2.5 kWp	£5,000 - £8,000

**Total: £13,600 - £21,850**

**Energy Efficiency Rating**

Current	Potential
65 (D)	85 (E)

**Living Standards**: 64 RANK (0-100)

**Crime**: 70 RANK (0-100)

There are 40+ fields of information in the EPC we can use to quickly filter the most suitable, or unsuitable, properties for retrofit programmes.

**Locarla Properties (467)**

**Energy Performance Map**

**Property Dashboard: 467**

**Organisation(s): 11**

- Housing Solutions Group: 222
- Radian Group Ltd.: 151
- A2Domination South: 68
- One Housing Group Ltd: 18
- Catalyst Housing Limited: 2
- Thames Valley Housing Association (TVHA): 1
- TPHA Limited: 1
- Middlesex Housing Co-operative Ltd: 1
- Moat: 1

**HOUSING STOCK EPC RATING**

Rating	Count
A	0
B	0
C	0
D	0
E	406
F	61
G	0

We regularly produce statistics and analysis from our EPC updates.

Housing Associations issuing the most EPCs as a % of their stock (April 2022 - March 2023)				
Housing Association	EPCs Issued (April 2022 - March 2023)	Total Stock	Group Stock	EPCs Issued as a % of Stock
Platform Housing Limited	8,031	39,716	39,718	20.22%
Home Group	7,571	44,329	48,291	15.68%
Sovereign Housing Association Limited	7,443	48,848	48,848	15.24%
Anchor	6,609	39,369	39,369	16.79%
Midland Heart	5,848	28,290	28,290	20.67%
Clarion Housing Association	5,537	99,297	99,297	5.58%
Aster Group	5,223	30,006	32,430	16.11%
Southern Housing	4,245	61,393	61,902	6.86%
Together Housing Group	4,146	35,779	35,779	11.59%
VIVID	3,969	26,270	26,270	15.11%
Wythenshawe Community Housing Group (WCHG)	3,837	13,388	13,388	28.66%
Riverside	3,524	51,159	63,818	5.52%
Accent Housing	3,521	17,806	17,806	19.77%
Gentoo Group Ltd.	3,429	28,701	28,701	11.95%
Red Kite Community Housing Ltd.	3,220	5,555	5,555	57.97%
Sanctuary Housing Association	3,165	68,218	90,502	3.5%
Thirteen Group	2,995	33,396	33,396	8.97%
L&Q Group	2,794	66,180	75,087	3.72%
Peabody Trust	2,198	44,576	79,757	2.76%
Flagship Housing Group	2,188	29,458	32,131	6.81%

About Us: <https://www.locarla.com/aboutus/>

Our Licences & Pricing: [https://www.locarla.com/register/locarla\\_licence\\_comparison](https://www.locarla.com/register/locarla_licence_comparison)

We would welcome the opportunity to show you the Locarla platform in an online demo. If this is something of interest, please get in touch with [amy.fitt@locarla.com](mailto:amy.fitt@locarla.com)